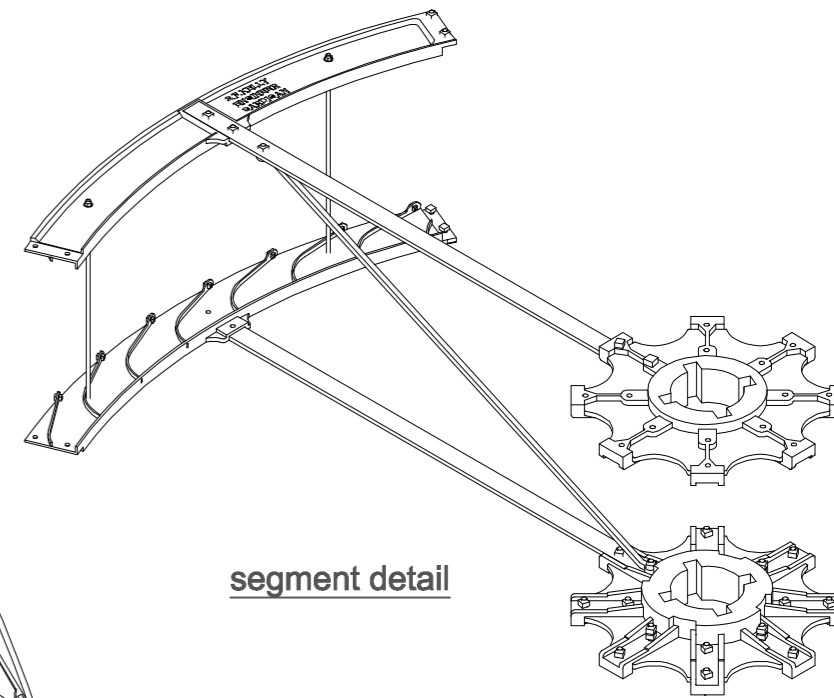
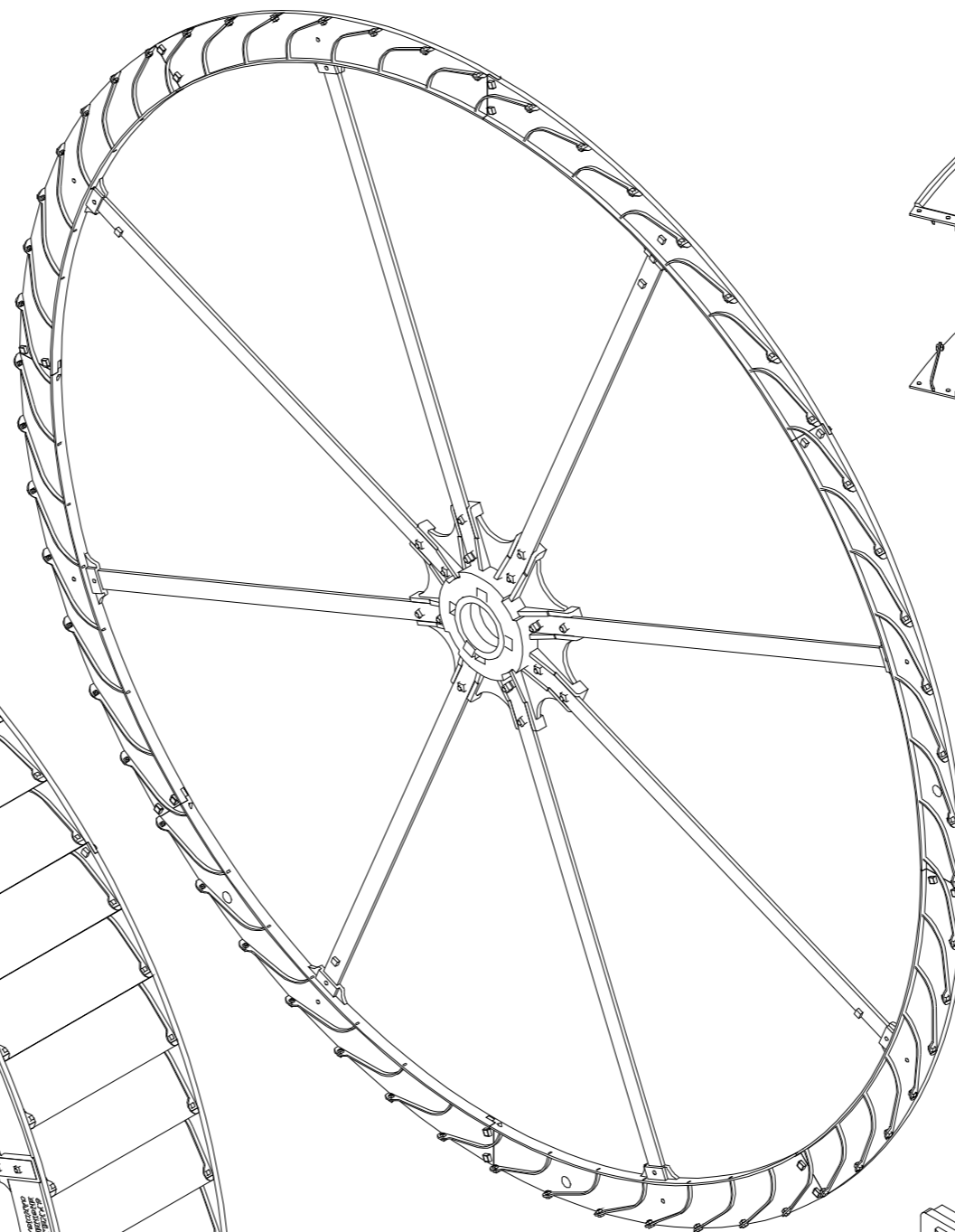
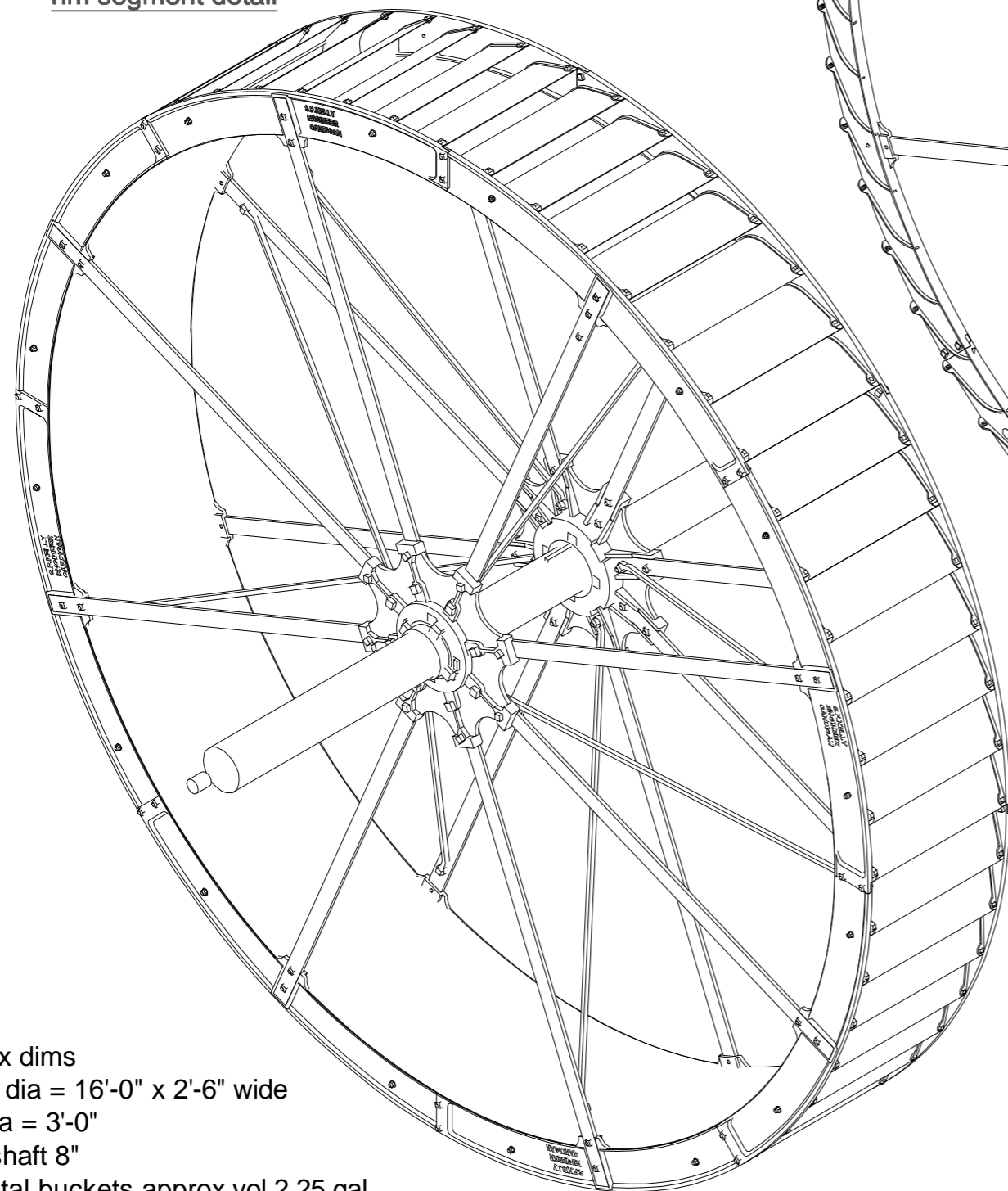
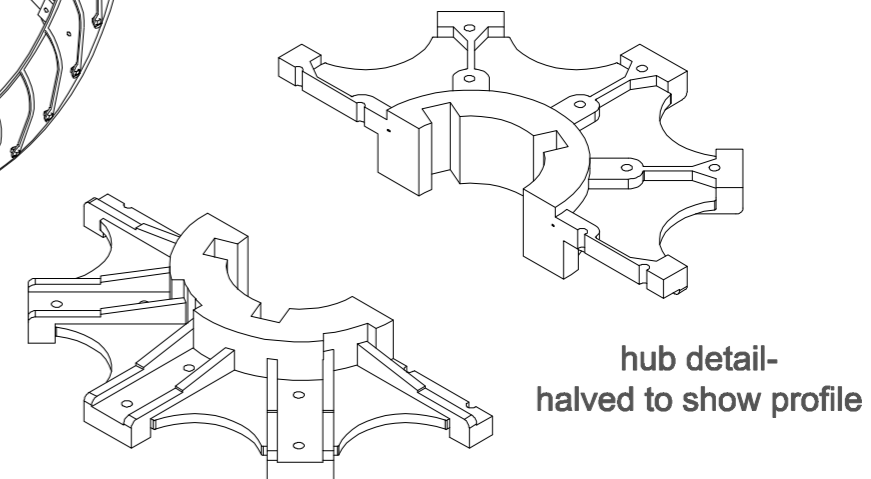


rim segment detail




segment detail



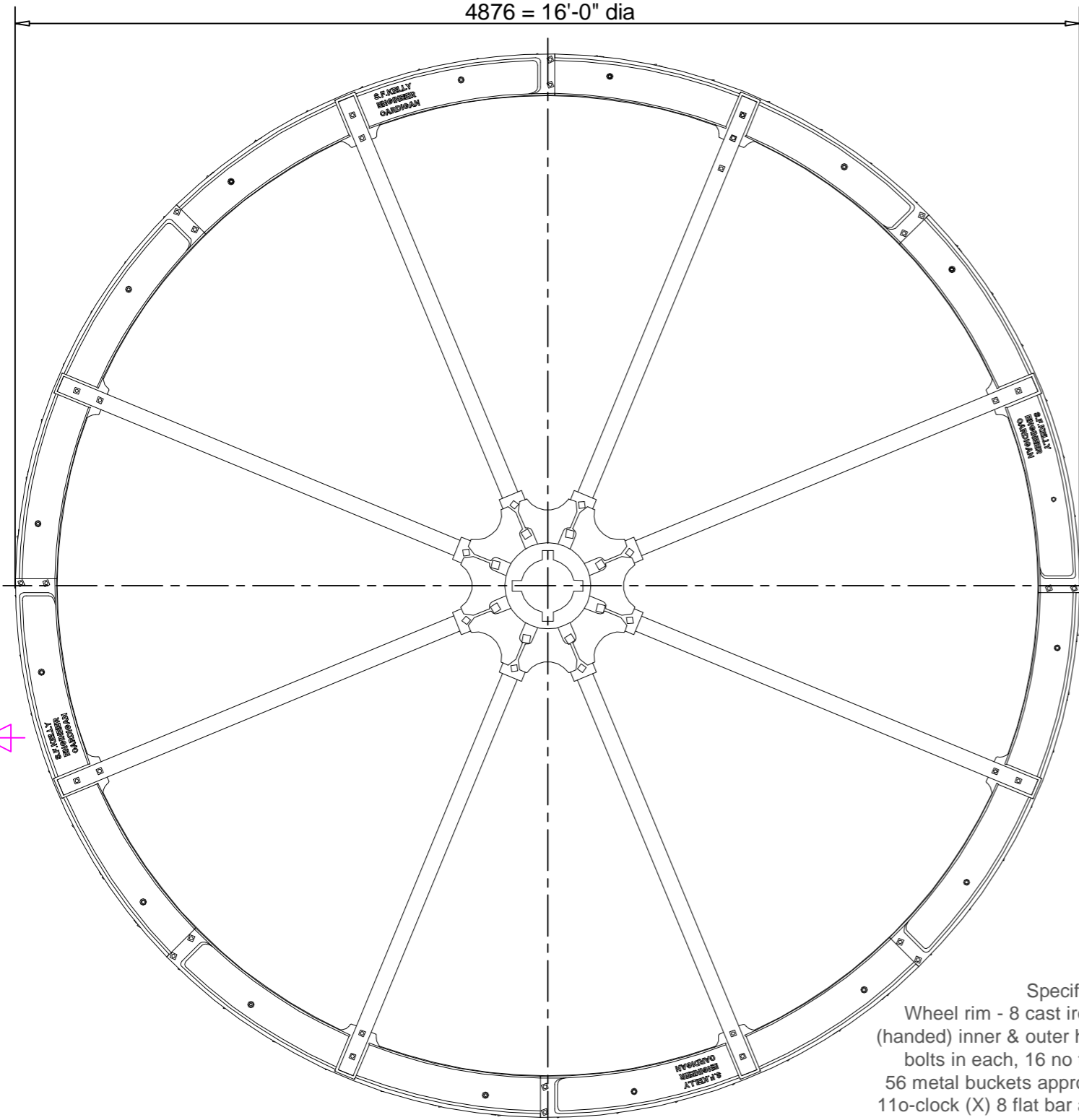
hub detail-
halved to show profile

Approx dims
 wheel dia = 16'-0" x 2'-6" wide
 hub dia = 3'-0"
 exist shaft 8"
 56 metal buckets approx vol 2.25 gal

read this drawing in conjunction with sheet 1

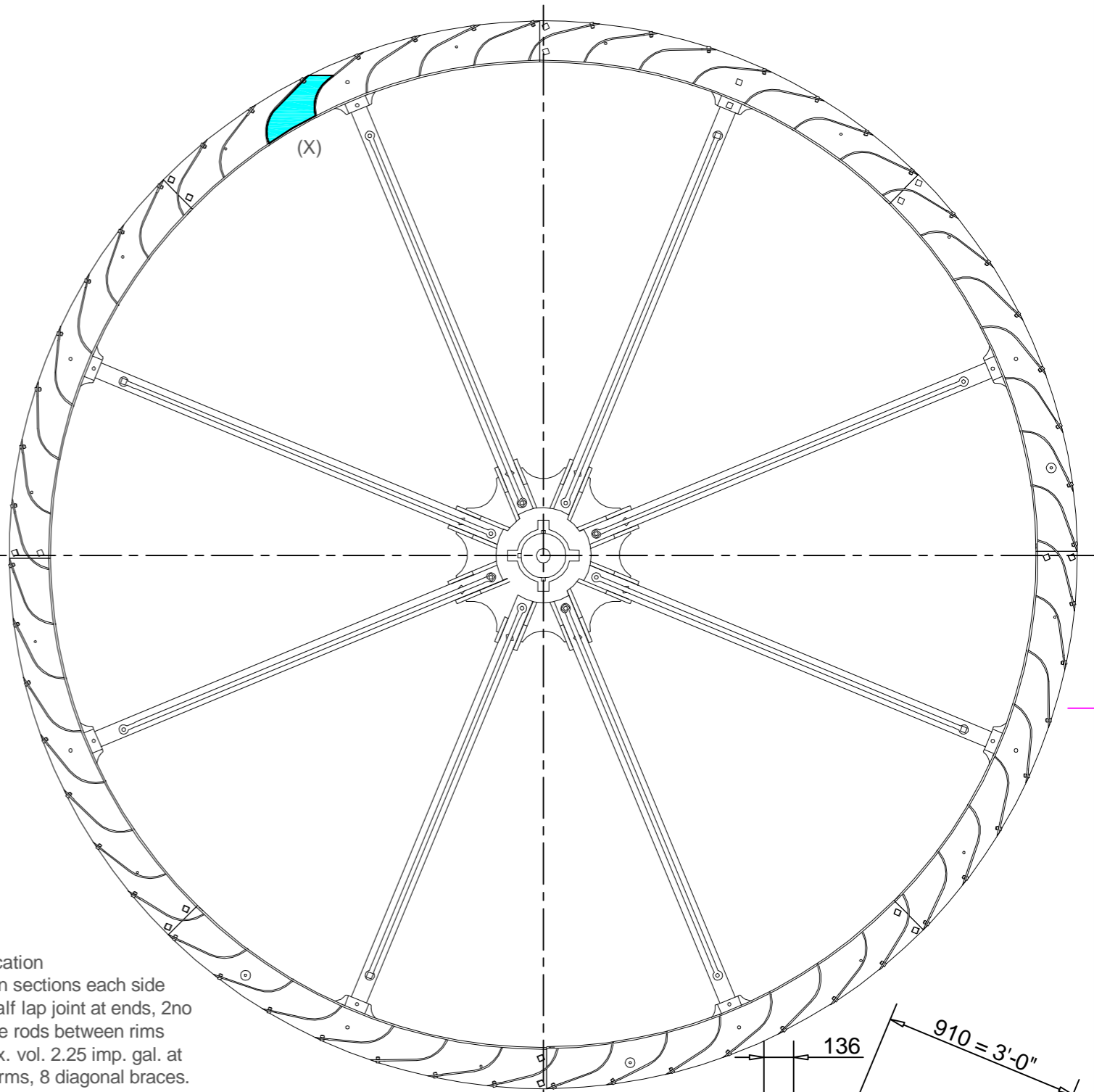
Mill Drawings milldrawings@gmail.com www.a0tech.co.uk				Mill Felin Bompren, National Heritage museum, St Fagans,	
in conjunction with Cymdeithas Melinau Cymru ~Welsh Mills Society		Title Water wheel 3d arrgt		Mill Ref NPRN 24768	
Drawn John Brandrick	Date Oct 2011	Scale 1-50@A3	OS Sht 171 Grid ST110 770	Drg No 24768-001 sht 2 of 2	

4876 = 16'-0" dia

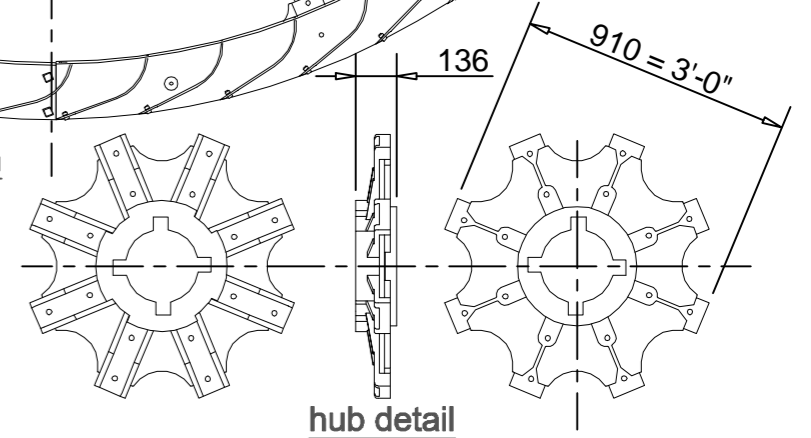


side elevation

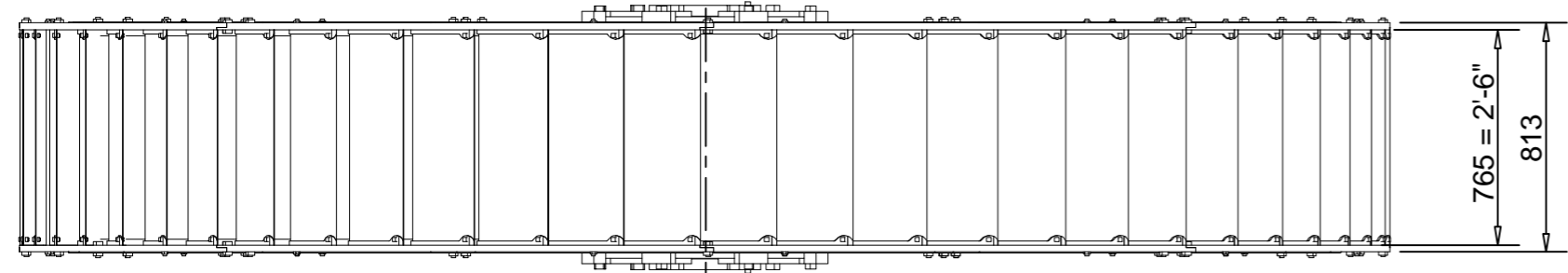
Specification
 Wheel rim - 8 cast iron sections each side (handed) inner & outer half lap joint at ends, 2no bolts in each, 16 no tie rods between rims
 56 metal buckets approx. vol. 2.25 imp. gal. at 11o'clock (X) 8 flat bar arms, 8 diagonal braces.
 All visible original bolts were square head
 Hub - single casting each side, 8 rebates for arms
 2no holes in each. 250mm aperture for 200mm shaft on 2no Plummer blocks



cross section



hub detail



plan

Mill Drawings milldrawings@gmail.com www.aotech.co.uk				Mill Felin Bompren, National Heritage museum, St Fagans,	
in conjunction with Cymdeithas Melinau Cymru ~Welsh Mills Society		Title Water wheel detail		Mill Ref NPRN 24768	
Drawn John Brandrick	Date Oct 2011	Scale 1-50@A3	OS Sht 171 Grid ST110 770	Drg No 24768-001 sht 1 of 2	