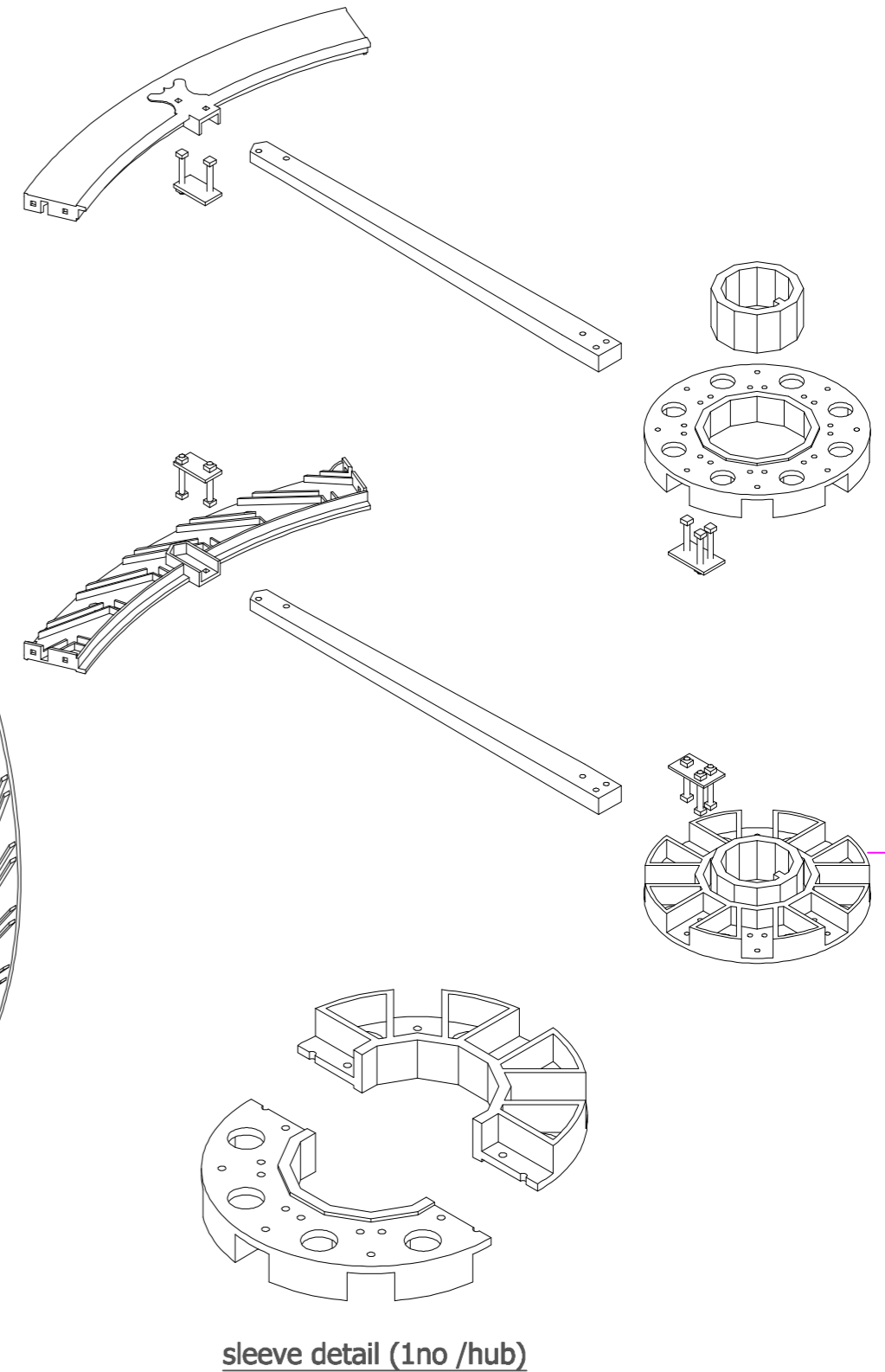
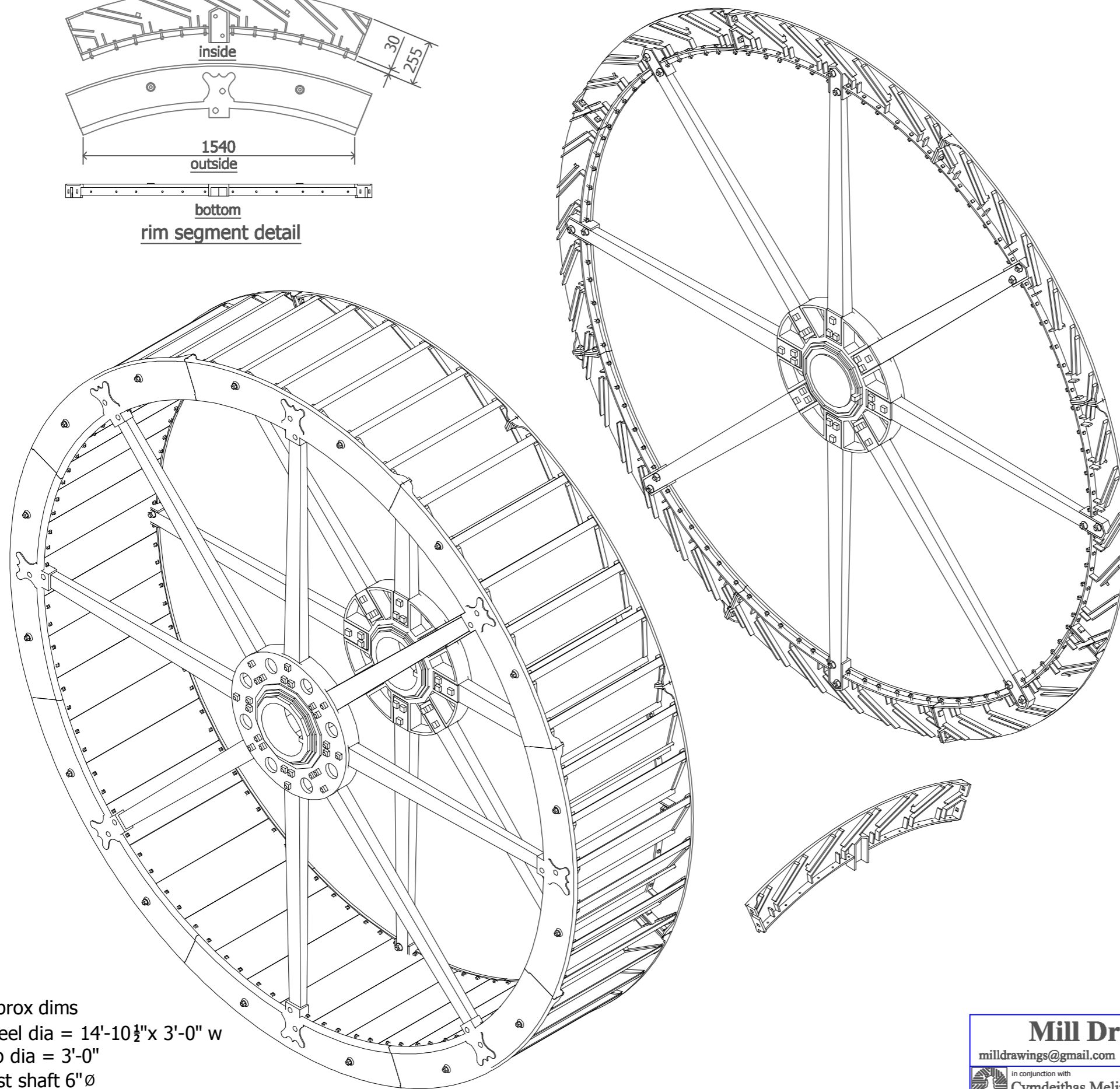
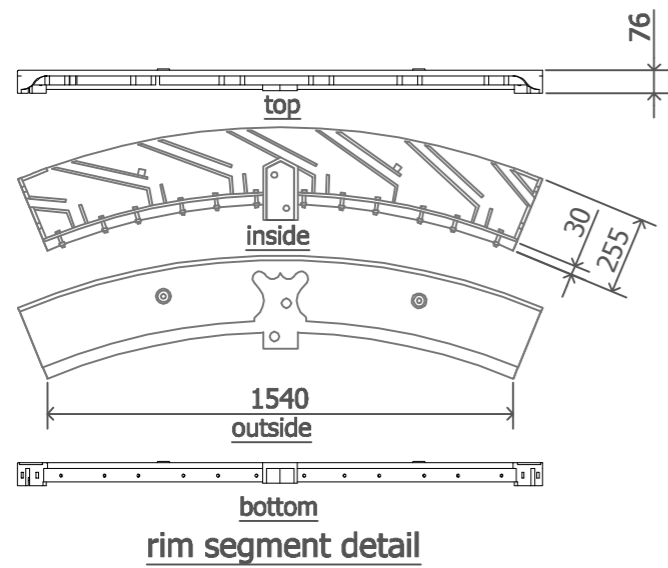




Note
Components measured April 2011 after dismantling & removal from site.
Open arrow heads used due to corrosion & original manfd in imperial

| | | | | |
|---|-----------------|-------------------------|--|---------------------|
| Mill Drawings milldrawings@gmail.com www.milldrawings.co.uk | | | Mill Felin Pontfaen, Llangwryfon, Aberystwyth, Ceredigion. SY23 4HA. | |
| | | | Water wheel detail | |
| Drawn John Brandrick | Date April 2011 | Scale 3d NTS 2d-1-50@A3 | Map Ref SN57SE Grid SN59807073 | Mill Ref NPRN 24747 |
| | | | Drg No sht 2 of 2 | |



read this drawing in conjunction with sheet 1

Approx dims
wheel dia = 14'-10½" x 3'-0" w
hub dia = 3'-0"
exist shaft 6" Ø
48 Wooden buckets approx vol. 9 gal @1 o'clock

| | | | |
|--|--------------------|--|--|
| Mill Drawings milldrawings@gmail.com www.milldrawings.co.uk | |  Mill Felin Pont-faen, Llangwryfon, Aberystwyth, Ceredigion. SY23 4HA. | |
| in conjunction with  Cymdeithas Melinau Cymru ~Welsh Mills Society | | Title Water wheel 3d arrgt | |
| Drawn John Brandrick | Date April 2011 | Scale 3d NTS 2d-1-50@A3 | O.S.Map Ref SN57SE Grid SN59807073 |
| Mill Ref NPRN 24747 | | Drg No sht 1 of 2 | |